



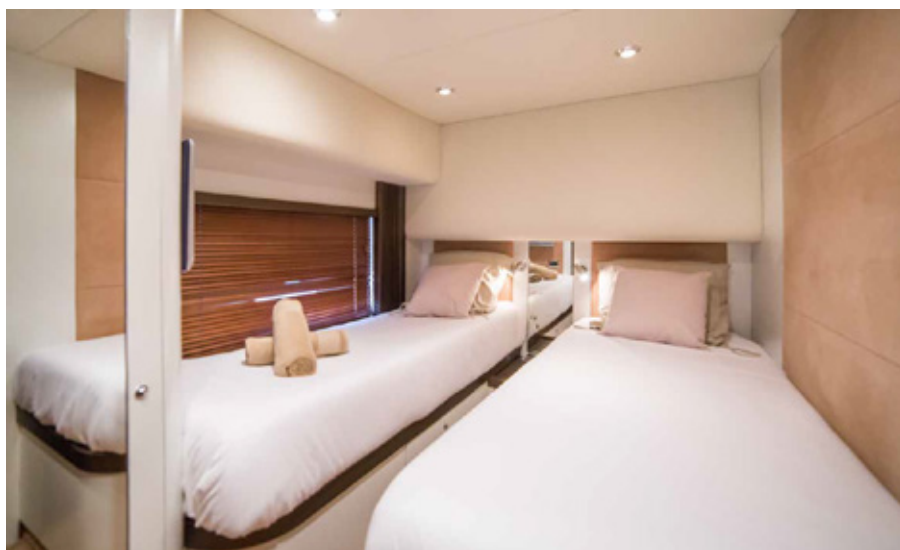
# SUNSEEKER PREDATOR 82



|               |   |
|---------------|---|
| HIGH SEASON*  | 7.990€ / day**                              |
| MID SEASON*   | 6.590€ / day**                              |
| LOW SEASON*   | 5.590€ / day**                              |
| CAPACITY      | 12 + 3 crew                                 |
| FUEL CONS     | 450 L/h, 850€***                            |
| LENGTH / BEAM | 25m / 6m                                    |
| INCLUDED      | paddle boards, snorkeling equipment, seabob |

\* High season - July & August  
 Mid season - June & September  
 Low season - the rest of the year

\*\* VAT INCLUDED. Prices do not include fuel  
 \*\*\* Approx. 1.5h of cruising, e.g. day out to Formentera  
 (Ibiza - Es Palmador - Illetes - Cala Saona - Ibiza)



The queen of our fleet, spanning twenty four metres long this prestige boat is the height of luxury. Outside you will find massive sun-beds at both the front and rear, exterior dining table & refrigerator. Indulge in her grand lounge area or head downstairs to her four well appointed ensuite cabins - 2 double, 1 twin and 1 single, as well as 5 bathrooms and interior lounge with all the techs. In the rear garage you will find a world of fun!

### ACCOMMODATION

- 1 master cabin
- 1 vip cabin
- 1 twin cabin
- 1 single
- 2 crew
- Max 12 guests on day charter
- Max 7 guests sleeping in port
- Max 7 guests sleeping at anchor
- Extra beds possible
- 4 bathrooms
- 1 crew bathroom

### INCLUDED

- Crew
- Towels
- Drinks
- Snacks
- Snorkels
- Seabob
- Inflatable paddle boards

**EXTRA:** Tender, Wakeboard, Water ski ,Jet Ski 250€ + VAT / day

### EQUIPMENT

- A/C
- Hard top
- Audio system
- Hydraulic platform
- Gangway
- Garage
- Fridge
- Freezer
- Microwave
- Oven
- Washing machine
- Dryer
- Hot water
- Coffee machine
- Interior dining table
- Exterior dining table
- Front and back sun beds
- Exterior fresh water shower
- Sunshade

### SPEED

Cruising speed 22 knots