

ASTONDOA 102 GLX





ASTONDOA

102 GLX

Guests
Day charter

12

Guests
Overnight

10+1

Cabins
Master, VIP,
2 Twins and
Studio

5

Bathrooms

6

Crew
Captain, Deckhand,
Chef and Stewardess

4

Base port
Botafoc (Ibiza)





ASTONDOA

102 GLX

LOA
(meters)

31.5

Beam
(meters)

7

Stabilizers

Navigation
Anchoring

Engines
MTU 16V
2,000 HP

2

Cruising
speed
(knots)

16

Fuel
consumption
aprox. (L/h)

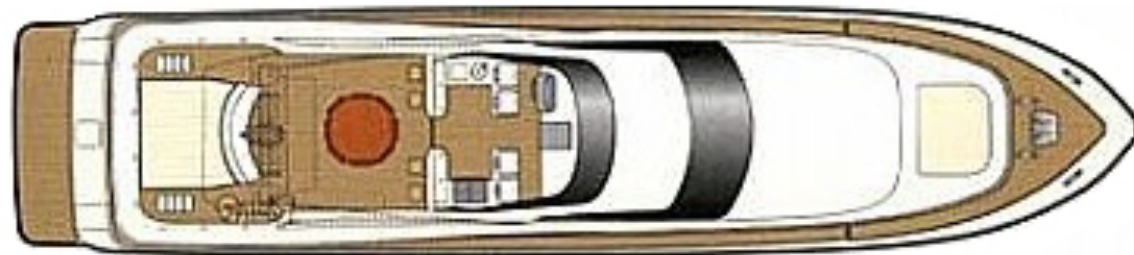
650



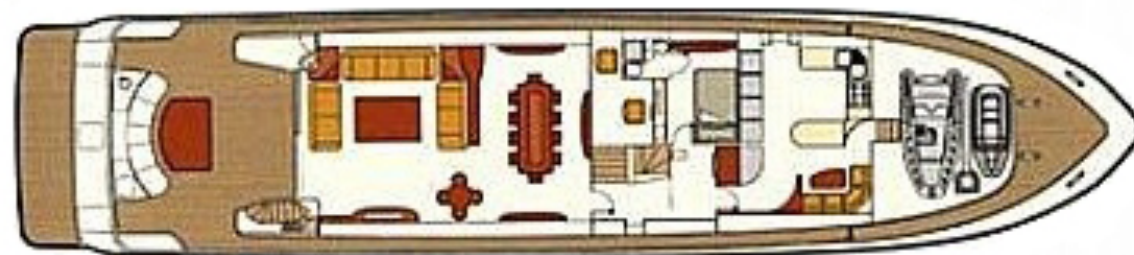


ASTONDOA

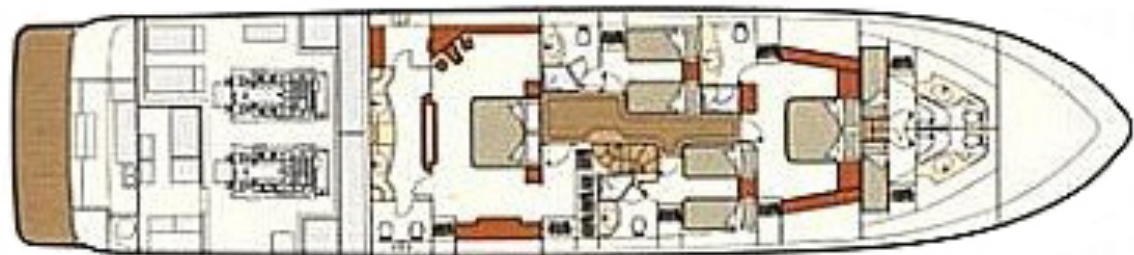
102 GLX



Flybridge



Cubierta principal



Planta baja

July and August

€12,000
per day

June and September

€11,000
per day

Rest of the year

€10,000€
per day

Price includes

Crew, mooring at base port, yacht and crew insurance, welcome pack, towels and cleaning.

Price excludes

VAT 21%, gasoil, transportation, mooring in other ports, meals on board. Jet ski (€250/day + VAT). Valid nautical license for navigating the jet ski is mandatory. SeaBob (€300/day + VAT), upon request.

APA

30% of the charter price.

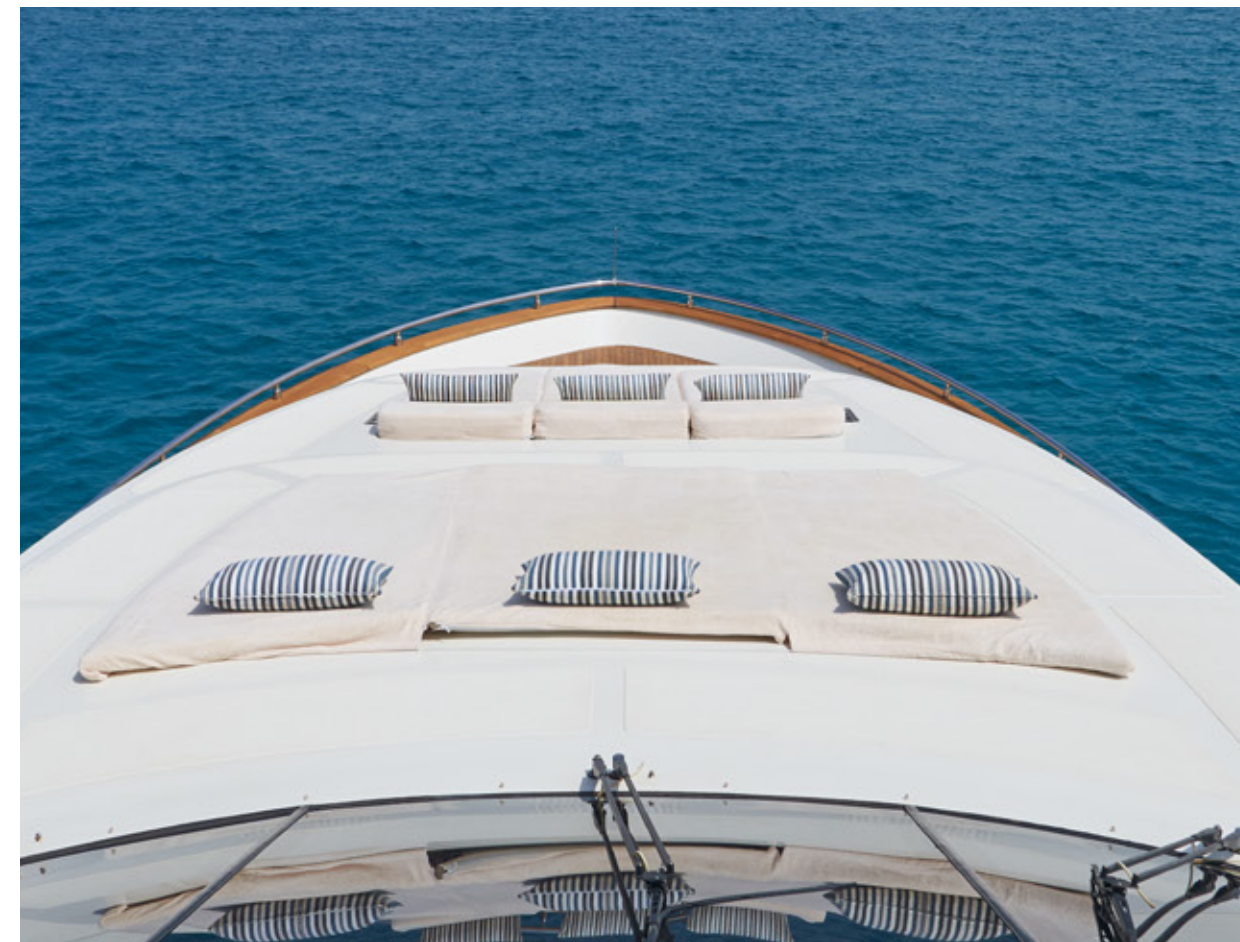
Reservations

For booking confirmation, 50% payment required. Charge of bank commissions for transfers or card payments, on behalf of the client.



ASTONDOA

102 GLX







KIRIOS



KIRIOS





Master's Cabin



VIP Cabin



Studio





Starboard Cabin





Port Cabin



ASTONDOA

102 GLX

Tender Jet
Wakeboard
Donut

Stand Up Paddle
Snorkelling equipment
Anti-jellyfish pool

Jet ski: €250/day + VAT
Seabob: €300/day + VAT

